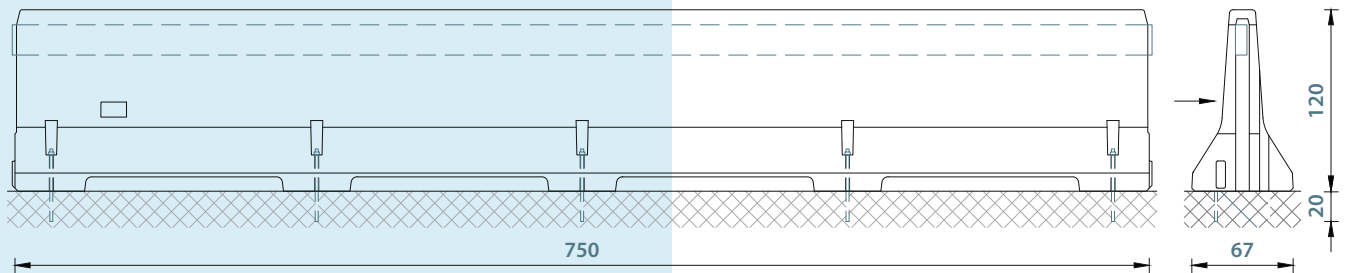




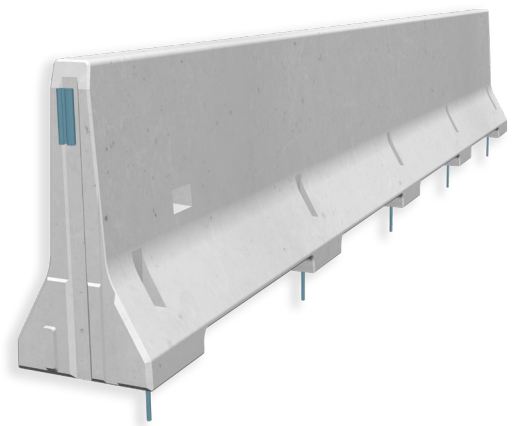
REBLOC
120A.1_7.5_5A
Dispositivi ancorati su asfalto

REBLOC | 120A.1_7.5_5A

Dispositivi ancorati su asfalto



Containment level	H4b
Working width	W2 ($W_N \leq 0.8$ m)
Impact severity level	ASI B
Vehicle intrusion	VI6 ($VI_N \leq 2.1$ m)
Installation	Anchored in asphalt (per element 5 x adhesive anchors M20x480 on the front or back side)
Minimum installation length	75 m (10 elements)
Initial/end anchorage	Not necessary, optional available
Dimensions L x W x H in cm	750 x 67 x 120 cm
Weight/element per m	6.030kg - 804kg/m
Curve radius	$r \geq 250$ m, smaller radii on request



Graz University of Technology, accreditation no: 259
TÜV SÜD LGÖ, NB 0531: assessment report no 725218343_3 RB120A.1_7.5_5A



RESISTENTE
AL GELO



RISPETTA
L'AMBIENTE



NESSUN
MATERIALE NOCIVO



CERTIFICATO
CE

PIACENZA (Sede centrale) _ St. di Cortemaggiore 25 / PC
FERRARA _ Via Ferrara 31 / Poggio Renatico / FE
PISTOIA _ Via Nociaccio 10 / Ponte Buggianese / PT

T 0523 599611 F 0523 599625
T 0532 829941 F 0532 824807
T 0572 93251 F 0572 932540

paverpc@paver.it
paverfe@paver.it
paverpt@paver.it

www.paver.it